

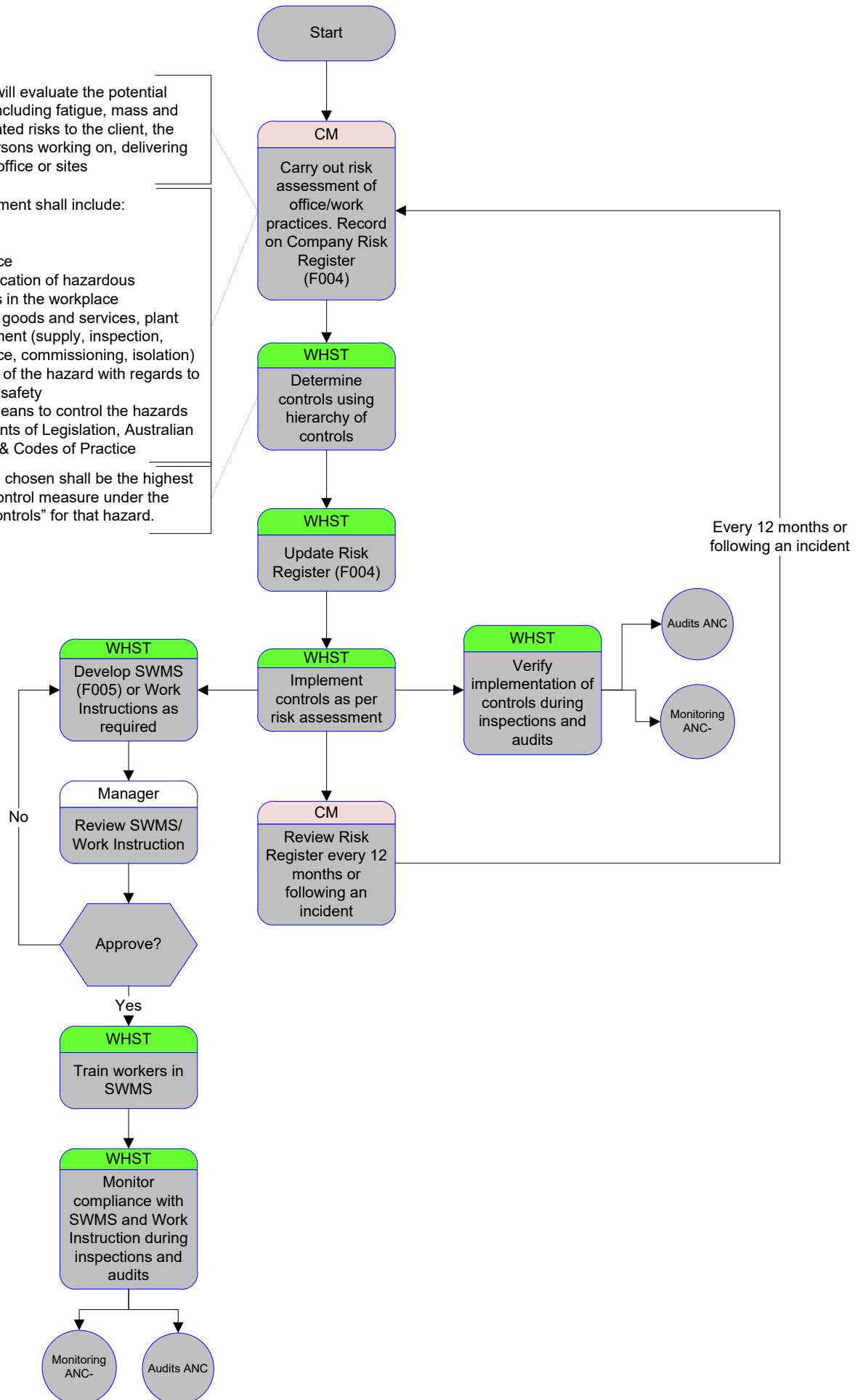
CM = Compliance Manager
WHST = WHS Team

An assessment will evaluate the potential health & safety including fatigue, mass and maintenance related risks to the client, the public and all persons working on, delivering to or visiting the office or sites

The risk assessment shall include:

- Fatigue
- Mass
- Maintenance
- The identification of hazardous substances in the workplace
- Purchased goods and services, plant and equipment (supply, inspection, maintenance, commissioning, isolation)
- The nature of the hazard with regards to health and safety
- Practical means to control the hazards
- Requirements of Legislation, Australian Standards & Codes of Practice

The control measure chosen shall be the highest possible viable control measure under the "hierarchy of controls" for that hazard.



Consequence	Has commonly repeatedly occurred	Known to have occurred	Could have occurred	Low likelihood of occurring	Unlikely to occur
Fatality or disability (or potential for), catastrophic plant/equipment failure	1	2	4	7	11
Hospital treatment required(or potential for), serious damage to property, plant & equipment	3	5	8	12	16
Medical treatment required (or potential for), minor damage to property, plant & equipment	6	9	13	17	20
First Aid treatment (or potential for), had potential to damage property or plant	10	14	18	21	23
No injury or damage of any consequence.	15	19	22	24	25

Hierarchy of Controls

- Elimination.** If you eliminate a hazard you completely remove the associated risk.
- Substitution.** If the hazard can't be eliminated, minimise the risks by substituting a substance or a process that has less potential to cause injury.
- Isolation.** You can make a structural change to the work environment or work process to interrupt the path between the worker and the risk.
- Administration.** You may be able to reduce risk by upgrading training, changing rosters or other administrative actions.
- Personal protective equipment.** When you can't reduce the risk of injury in any other way, use personal protective equipment (such as gloves or goggles) as a last resort