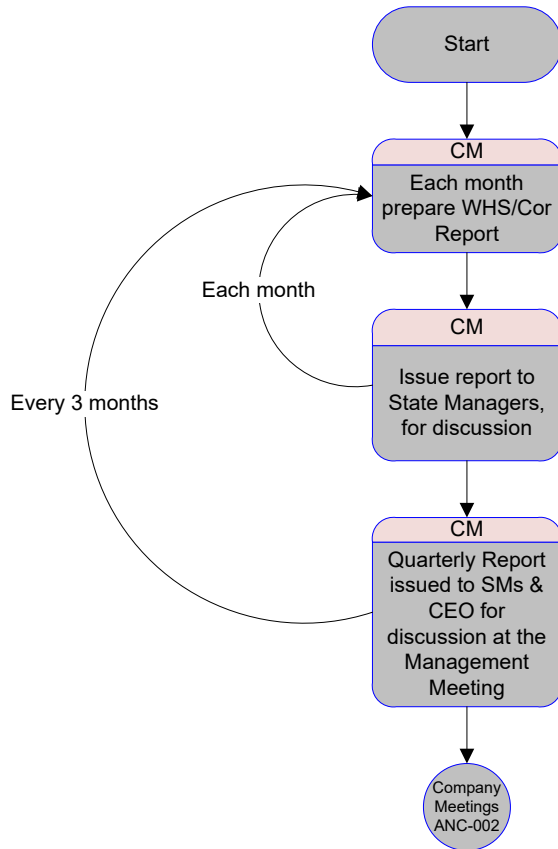


CM = Compliance Manager
SM = State Manager



Monthly Report includes:

- WHS & Chain of Responsibility (CoR) – performance, statistics, incidents
- Training needs
- Corrective Preventive Action

Quarterly Report includes:

- WHS & Chain of Responsibility (CoR) – performance, statistics, incidents
- Audit results
- Communication (WHS & CoR) from external interested parties
- Training needs
- Effectiveness of training
- Corrective Preventive Action
- Performance against company WHS & CoR objectives & targets
- Changes that could affect the WHS/CoR system, including developments in legal and other requirements